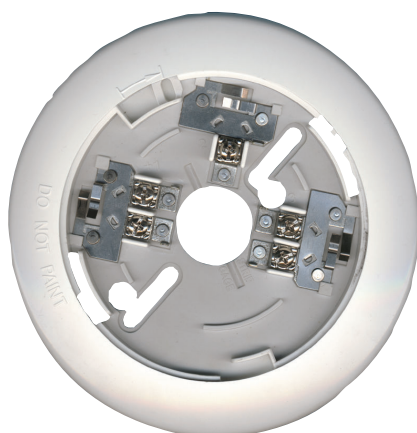



BOSCH

Invented for life

D7050-B6 Two-wire Detector Base



- Connects to multiplex bus of the FPD-7024 or D7024 Addressable FACP and DS7400Xi Control Panel
- Detector's head is easily removed by twisting
- Two-piece detector head and base design allows pre-wiring the system

The D7050-B6 is the required base for the D7050 Multiplex Photoelectric Smoke Detector Head and the D7050TH Multiplex Photoelectric Smoke Heat Detector Head. It connects to the multiplex bus of the FPD-7024 or D7024 Addressable Fire Alarm Control Panels (FACPs) and DS7400Xi Control Panel.

Note The D7024 FACP requires a D7039 MUX Expansion Module and control panel ROM version 2.0 or higher.

Certifications and Approvals

Region	Certification	
Europe	CE	89/336/EEC, EN55022: 1998, EN50130-4: 1995, EN60950: 2000, EN61000-3-2, EN61000-3-3, EN61000-4-2, EN61000-4-3, EN61000-4-4, EN61000-4-5, EN61000-4-6, EN61000-4-11
USA	UL	UROX: Smoke - Automatic Fire Detectors (UL268 and A), UROX7: Smoke - Automatic Fire Detectors Certified for Canada (cULus)
	FM	
	CSFM	7300-1615: 176
	NYC-MEA	12-92-E, Vol. 14

Installation/Configuration Notes

Compatible Products

The following products are compatible with the D7050-B6 detector base:

Category	Product ID	Product Description
Control Panels	FPD-7024	FACP
	D7024	FACP
	D7024-EXP	FACP for export
Detectors	D7050	Multiplex photoelectric smoke detector
	D7050TH	Multiplex photoelectric smoke detector with 135°F (57°C) heat sensor
Remote Annunciators	DRA-12/24	12 VDC and 24 VDC remote annunciator
Interface Modules	D8125MUX	Multiplex bus interface module

Mounting Considerations

The D7050-B6 Base can be mounted on a four-inch square, a four-inch octagonal, or a single-gang box. It can also be surface mounted with anchors, mollies, or wing nuts.

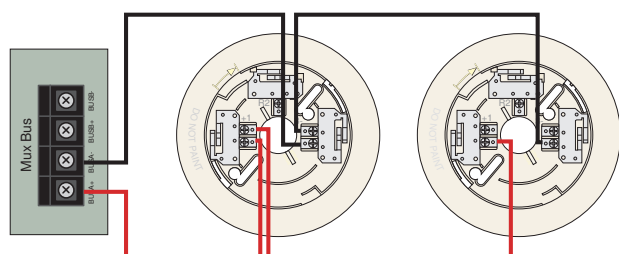
Number of Devices Allowed on Loop

The number of multiplex smoke or smoke-heat detectors allowed on the multiplex bus is determined by the wire gauge and the total wire length of the bus. Do not exceed 30 Ω maximum line resistance. Refer to the *D7039 Installation Guide* (P/N: 38685) for multiplex bus wiring requirements.

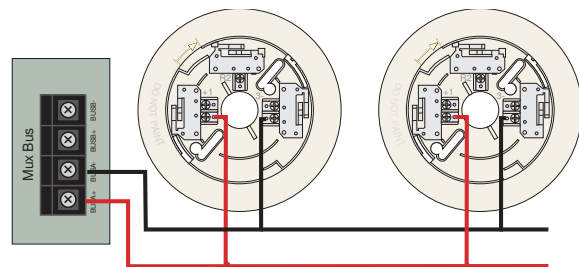
Wiring Connection to D7024 MUX bus through D7039

Warning Do not use shielded cable.

The D7050-B6 bases can be wired in a series or using the T-tap method. See the following illustrations.



Series Connection



T-tap Connection

Parts Included

Quant.	Component
1	Detector base
1	Hardware pack
1	Literature pack

Technical Specifications

Environmental Considerations

Relative Humidity:	0% to 93% non-condensing
Temperature (Operating):	+32°F to +100°F (0°C to +38°C)

Mechanical Properties

Color:	Off-white
Material:	High-impact, fire-retardant polymer plastic

Ordering Information

D7050-B6 Two-wire Detector Base

D7050-B6

Required base for the D7050 Multiplex Photoelectric Smoke Detector Head and the D7050TH Multiplex Photoelectric Smoke Heat Detector Head

Americas:
Bosch Security Systems, Inc.
130 Perinton Parkway
Fairport, New York, 14450, USA
Phone: +1 800 289 0096
Fax: +1 585 223 9180
security.sales@us.bosch.com
www.boschsecurity.us

Europe, Middle East, Africa:
Bosch Security Systems B.V.
P.O. Box 80002
5600 JB Eindhoven, The Netherlands
Phone: +31 40 2577 284
Fax: +31 40 2577 330
emea.securitysystems@bosch.com
www.boschsecurity.com

Asia-Pacific:
Robert Bosch (SEA) Pte Ltd, Security Systems
11 Bishan Street 21
Singapore 573943
Phone: +65 6258 5511
Fax: +65 6571 2698
apr.securitysystems@bosch.com
www.boschsecurity.com

Represented by